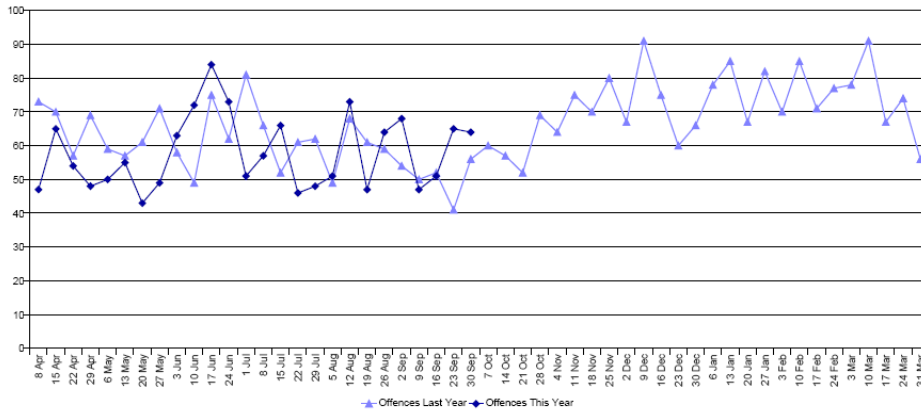


Weekly Residential Burglary Performance - Barnet



FYTD Totals are calculated from 1 April

Offences	22 Jul	29 Jul	5 Aug	12 Aug	19 Aug	26 Aug	2 Sep	9 Sep	16 Sep	23 Sep	30 Sep	FYTD Total
Last Year	61	62	49	66	61	59	64	50	52	41	56	1586
This Year	46	48	51	73	47	64	68	47	51	65	64	1510
% Change	-24.6%	-22.6%	4.1%	7.4%	-23.0%	8.5%	25.9%	-6.0%	-1.9%	58.5%	14.3%	-4.8%

Sanction Detections	22 Jul	29 Jul	5 Aug	12 Aug	19 Aug	26 Aug	2 Sep	9 Sep	16 Sep	23 Sep	30 Sep	FYTD Total	SD Rate
Last Year	4	3	1	0	10	2	0	31	4	33	17	259	16.3%
This Year	3	6	10	24	2	5	7	0	2	0	6	210	13.9%

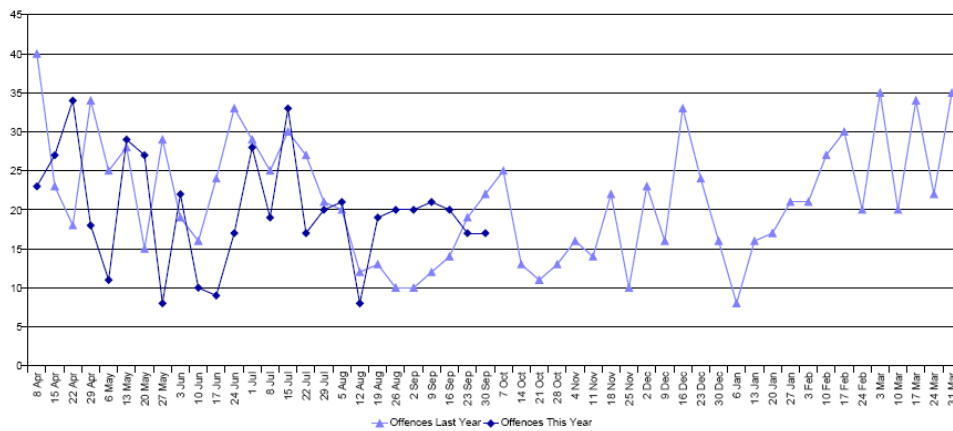
For Offences - Plum indicates a percentage increase on last year, and Sky Blue indicates a percentage decrease on last year. For Sanction Detections - Plum indicates a SD Rate decrease on last year, and Sky Blue indicates a SD Rate increase on last year.

Data is subject to daily change
Last Refresh Date: 03/10/2012

Performance Helpdesk - 783131
If there are any queries with this report, please call the Helpdesk
PD077/1213/26/v1

03/10/2012 © MOPAC (2012)
Page 6

Weekly Personal Robbery Performance - Barnet



FYTD Totals are calculated from 1 April

Offences	22 Jul	29 Jul	5 Aug	12 Aug	19 Aug	26 Aug	2 Sep	9 Sep	16 Sep	23 Sep	30 Sep	FYTD Total
Last Year	27	21	20	12	13	10	10	12	14	19	22	571
This Year	17	20	21	8	19	20	20	21	20	17	17	518
% Change	-37.0%	-4.8%	5.0%	-33.3%	46.2%	100.0%	100.0%	75.0%	42.9%	-10.5%	-22.7%	-9.3%

Sanction Detections	22 Jul	29 Jul	5 Aug	12 Aug	19 Aug	26 Aug	2 Sep	9 Sep	16 Sep	23 Sep	30 Sep	FYTD Total	SD Rate
Last Year	2	1	9	4	3	0	2	3	0	0	2	105	18.4%
This Year	5	3	8	3	4	31	1	0	1	3	1	119	23.0%

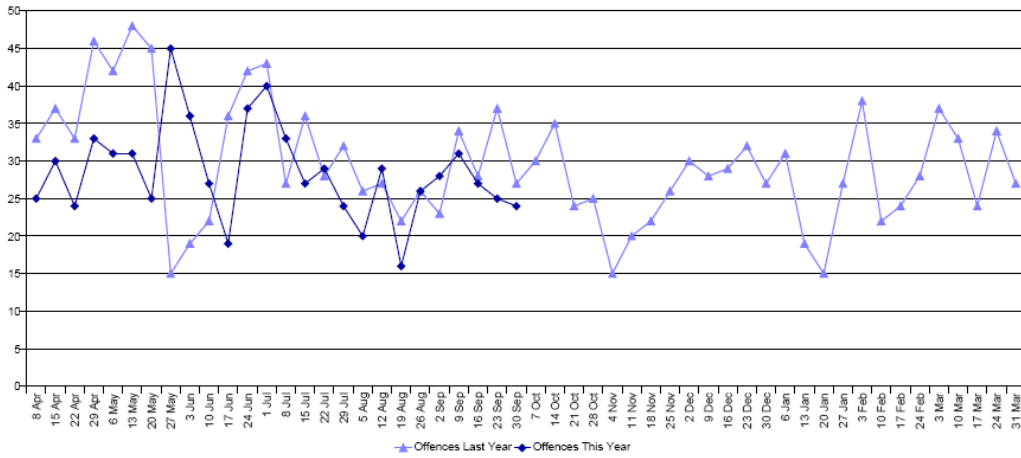
For Offences - Plum indicates a percentage increase on last year, and Sky Blue indicates a percentage decrease on last year. For Sanction Detections - Plum indicates a SD Rate decrease on last year, and Sky Blue indicates a SD Rate increase on last year.

Data is subject to daily change
Last Refresh Date: 03/10/2012

Performance Helpdesk - 783131
If there are any queries with this report, please call the Helpdesk
PD005/1213/26/v1

03/10/2012 © MOPAC (2012)
Page 6

Weekly Violence With Injury Performance - Barnet



FYTD Totals are calculated from 1 April

Offences	22 Jul	29 Jul	5 Aug	12 Aug	19 Aug	26 Aug	2 Sep	9 Sep	16 Sep	23 Sep	30 Sep	FYTD Total
Last Year	28	32	26	27	22	26	23	34	28	37	27	837
This Year	29	24	20	29	16	26	28	31	27	25	24	746
% Change	3.6%	-25.0%	-23.1%	7.4%	-27.3%	0.0%	21.7%	-8.8%	-3.6%	-32.4%	-11.1%	-10.9%

Sanction Detections	22 Jul	29 Jul	5 Aug	12 Aug	19 Aug	26 Aug	2 Sep	9 Sep	16 Sep	23 Sep	30 Sep	FYTD Total	SD Rate
Last Year	8	11	14	4	15	6	12	11	8	14	7	297	35.5%
This Year	11	12	4	12	4	11	9	11	5	14	8	249	33.4%

For Offences - Plum indicates a percentage increase on last year, and Sky Blue indicates a percentage decrease on last year. For Sanction Detections - Plum indicates a SD Rate increase on last year, and Sky Blue indicates a SD Rate decrease on last year.

Data is subject to daily change
 Last Refresh Date: 03/10/2012

Performance Helpdesk - 783131
 If there are any queries with this report, please call the Helpdesk
 PR4R2/1212/26/V1

03/10/2012 © MOPAC (2012)
 Page 6

Repeat Victims Summary - All Offences and Domestic Violence August 2012

For incidents recorded during August 2012, 7549 Victims had also been a victim of crime in the previous 12 months.
 3124 victims of Domestic Violence had also been a victim of Domestic Violence in the previous 12 months

Lambeth had the highest number of Repeat Victims of all crime, with 361.
 Croydon had the highest number of Repeat Victims of Domestic Violence crime, with 164.

